



POOL HOUSE

COOL

Dive right in. The water's fine and thanks to stylish pool houses, the living is easy.

BY BRAD MEE

PHOTO BY LINDSAY SALAZAR

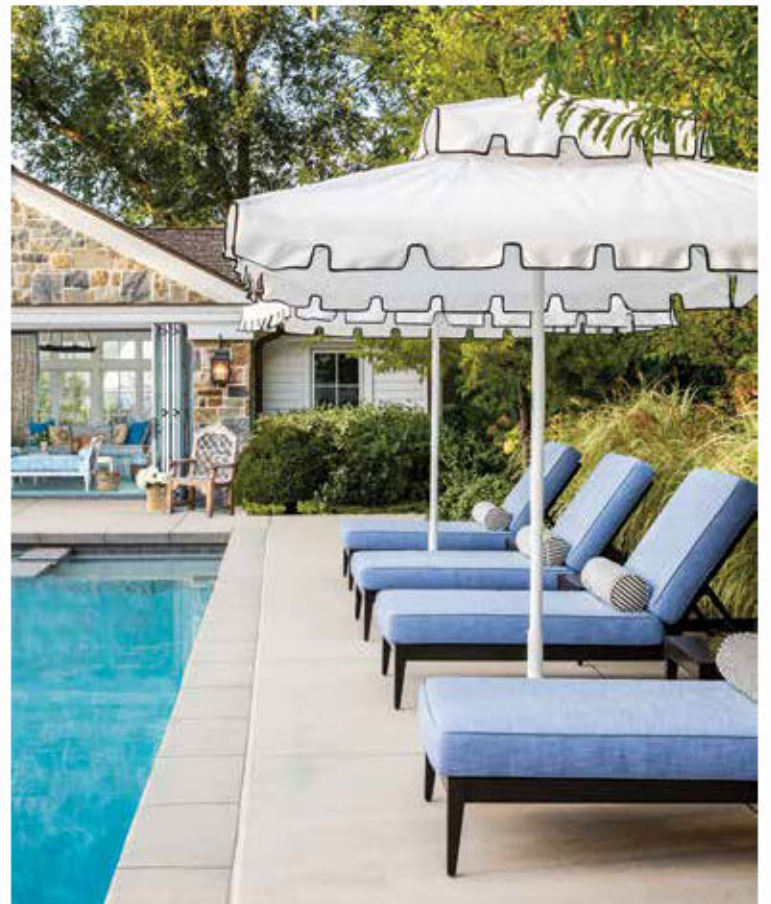


When a pool has already turned a backyard into a steps-away summer vacation, how do you make it even more of a retreat? Add a pool house. These waterfront sanctuaries invite us to towel off, lounge, entertain and escape summer's heat in stylish comfort. Thanks to imaginative creators, these five Utah pool houses—ranging from classic to contemporary—deliver splashy architecture, features and design that define summer living at its best.

PREVIOUS PAGE: In this Salt Lake City poolhouse, folding doors open to invite guests into the year-round gathering space, located near a large pool and a pergola-shaded dining area. RIGHT: The interior treats visitors to chic design and come-as-you-are comfort.

THIS BEGUILING POOL house is an irresistible destination located at the back of a lushly landscaped property in Salt Lake City. "We used it to create a view from the main house and to screen the scene behind it," says designer Hillary Taylor, who was inspired by a feminine garden party when she fashioned the interior's gathering space, wet bar, changing room and full bathroom. Randomly-set bluestone floors, white walls and black accents ground the decidedly playful décor, 80s-inspired trellis patterns and sherbet-colored hues. Custom outdoor furniture and durable performance fabrics make the sophisticated space as practical and pool-friendly as it is pretty. The pool house also hosts a potting shed and storage room.

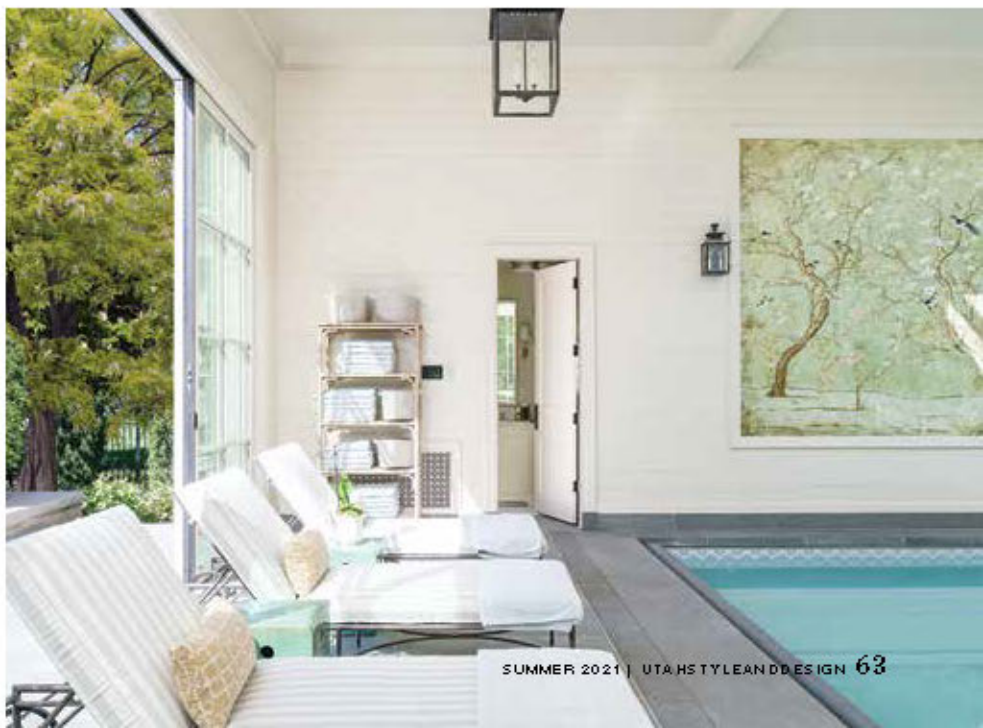




ARCHITECT: JON JANG ARCHITECT AIA; BUILDER: EVERGREENE CONSTRUCTION; INTERIOR DESIGN: HILLARY W TAYLOR INTERIORS; LANDSCAPE DESIGN: KAPPUS LANDSCAPE
PHOTOS BY LINDSAY SALAZAR



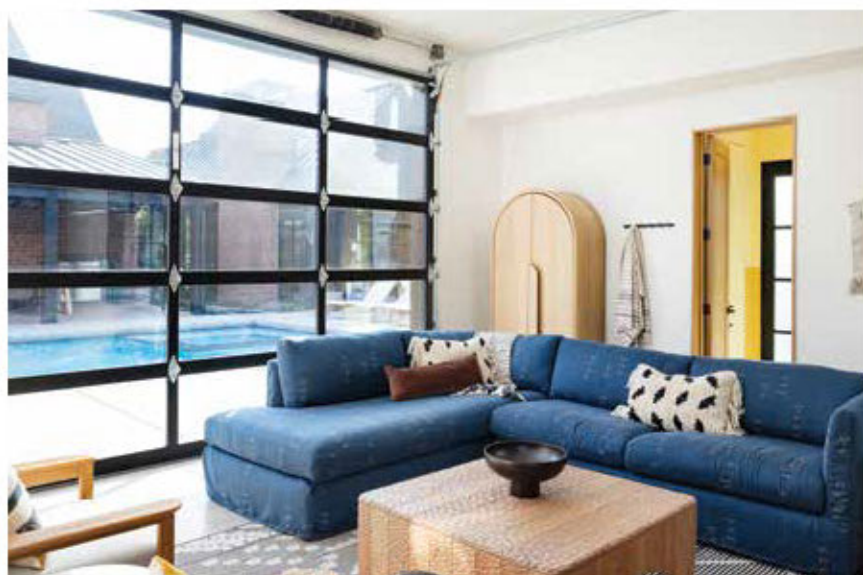
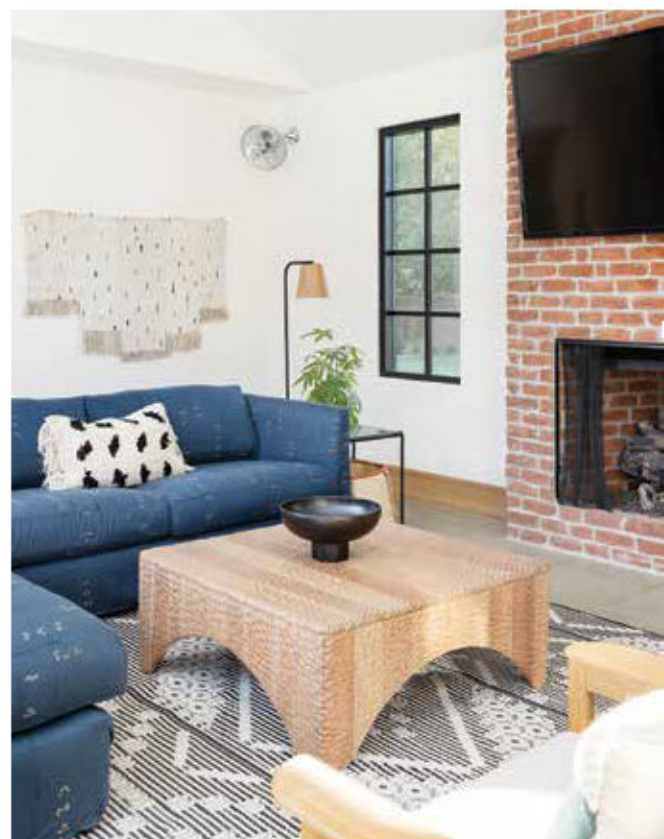
"IT'S A JEWEL BOX designed to be enjoyed inside and out," says architect Clayton Vance, describing a Holladay pool house he patterned on traditional European orangeries. "It's a garden pavilion enclosed by stone and glass that maximizes interior light." Inside, a large pool sparkles like an aquamarine gem stone. Vance teamed with architect Juliette Yu and builder Jackson & LeRoy to create the classically designed structure and opened the three sides of the building that are oriented toward the main house. "A connection to the outside is critical to indoor pools," he explains about the year-round backyard retreat. Informal seating areas surround the interior pool while connected outdoor lounge and gathering spaces meld into a lush landscape.



ARCHITECT: CLAYTON VANCE
ARCHITECTURE; BUILDER: JACKSON
& LEROY; INTERIOR DESIGN: DORAN
TAYLOR INC; LANDSCAPE DESIGN:
NORTHLAND DESIGN
PHOTOS BY JOSHUA CALDWELL



"WE WANTED THE owners' warm, casual and inviting personalities to shine through in the design of the pool house," says designer Brynne Flowers, who teams with Parker Lamborn as principals of John Martine. The detached building's homestead-meets-industrial style complements the Alpine residence's ranch style. A large glass garage door opens to a sunny interior where terrazzo and concrete floors, yellow cement tiles, plaster-detailed cabinetry and assorted Sunbrella fabrics deliver a relaxed vibe and easy living to the off-the-pool retreat. A brick fireplace nods to the home's architecture while helping to extend the family's pool and outdoor entertaining season.



ARCHITECT: THINK ARCHITECTURE;
BUILDER: ROBISON HOME BUILDERS;
INTERIOR DESIGN: JOHN MARTINE
PHOTOS BY MAUSSA MABEY



CREATING A STUNNING focal point from the Highland home, a pair of identical pool houses flank a broad pergola at the back end of a dark, rectangular pool. One structure serves as a restroom and shower, and the other provides storage for pool items and equipment. Strong symmetry reinforces the setting's compelling classic design.

ARCHITECTURE: BRADFORD R. HOUSTON DESIGN STUDIO; BUILDER: JACKSON & LEROY; INTERIOR DESIGN: ESTABLISH DESIGN; LANDSCAPE DESIGN: SUNLINE LANDSCAPES
PHOTOS BY JOSHUA CALDWELL





Exquisitely detailed with cedar siding, white trim and copper Bedford lanterns, this Holladay home's pool house exudes classic charm. See more on the following pages.
PHOTO BY LINDSAY SALAZAR



ARCHITECTURAL DESIGN, CONSTRUCTION AND INTERIOR: THE FOX GROUP; LANDSCAPE BY EMILY BROOKS WAYMENT; PHOTOS BY LINDSAY SALAZAR



"IT'S TRULY OUR family's favorite spot to gather when we all want to be close together and chatting," says homeowner Cara Fox, who teamed with husband Tom to design, build and outfit their chic pool house in Holladay. The main home's Hamptons Colonial style drove the pool house's architectural design and details. Inside, a two-story fireplace constructed of Utah stone anchors an open liv-

ing space comprising a sitting area, small kitchen and dining table that seats 12. A changing room/bathroom and a separate laundry room complete the livable floor plan. Large granite squares clad the pool deck and exterior patios with a classic checkerboard pattern that flows seamlessly inside the pool house, creating continuity and no-fuss practicality. ■